



GAT MONTHLY MEMBERSHIP PROGRESS REPORT

Results as of: 12/31/2022

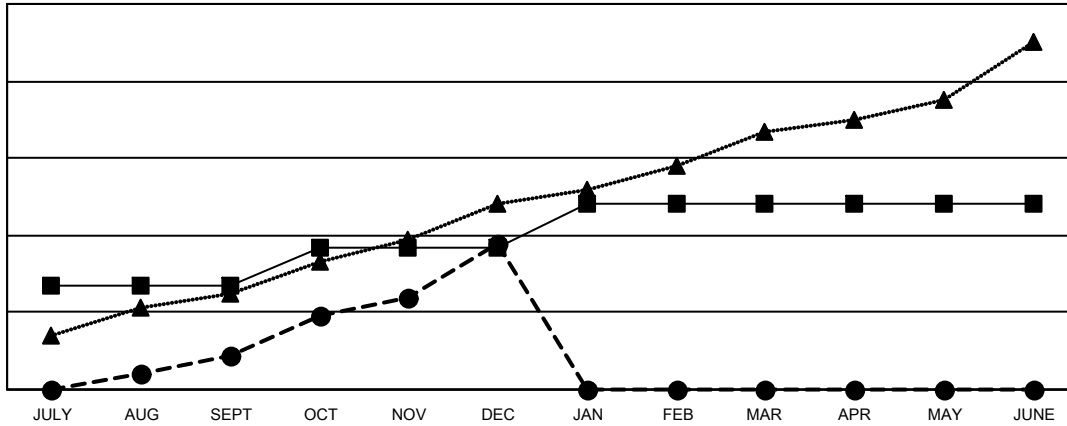
Multiple District 306

LOCATION: REP OF SRI LANKA

Clubs			
RESULTS FOR 2022-2023			
QUARTER	NEW CLUB GOAL	NEW CLUBS	DROPPED CLUBS
JULY/AUG/SEPT	27	9	28
OCT/NOV/DEC	10	29	3
JAN/FEB/MAR	11	0	0
APR/MAY/JUNE	0	0	0

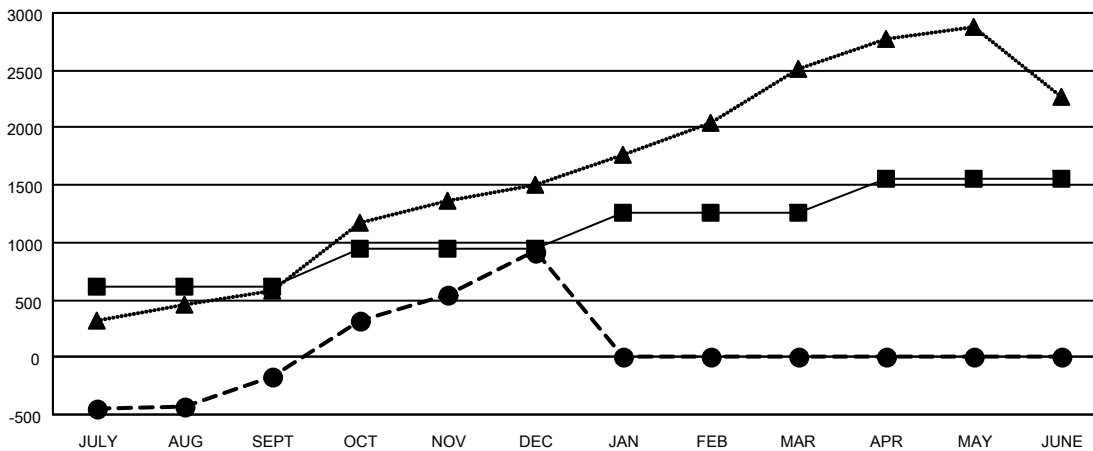
Members			
RESULTS FOR 2022-2023			
QUARTER	MEMBER GROWTH NET GOAL	MEMBER GROWTH ACTUAL	DROPPED MEMBERS ACTUAL (including transfers)
JULY/AUG/SEPT	610	947	1,019
OCT/NOV/DEC	329	2,156	963
JAN/FEB/MAR	324	0	0
APR/MAY/JUNE	290	0	0

GOALS AND ACTUAL NEW CLUBS CUMULATIVE



- - CURRENT YEAR GOALS FOR NEW CLUBS
- - CURRENT YEAR ACTUAL NEW CLUBS
- ▲ - LAST YEAR ACTUAL NEW CLUBS

GOALS AND ACTUAL MEMBERS CUMULATIVE



- - MEMBER GROWTH NET GOAL
- - MEMBER GROWTH ACTUAL
- ▲ - LAST YEAR MEMBERSHIP ACTUAL

DROPPED CLUBS: 31	
DROPPED MEMBERS	
DECEASED	33
CLUB CANCELLED	462
OTHER	1,489
TOTAL	1,984

441 CLUBS OF 680 ADDED 1 OR MORE NEW MEMBERS

[CLICK HERE FOR CUMULATIVE MEMBERSHIP DATA](#)

GENDER DISTRIBUTION	
MALE	13,406 (74.36%)
FEMALE	4,621 (25.63%)
NON BINARY	0 (0.00%)
PREFER NOT TO ANSWER	1 (0.01%)
TOTAL FAMILY UNIT MEMBERS	7,261
FAMILY MEMBERS PAYING HALF DUES	4,209